



ASSOCIATION MANAGEMENT, INC.

Condominium and Homeowners' Association Management

Important Information For All Westwind/Reserve Homeowners

In accordance with Florida Statute 720.3035, which became effective July 1, 2007, your Board of Directors, after many months of consideration, voted to approve the color pallet for the Westwind/Reserve at Ridgemoor Homeowners' Association.

Per Florida Statute 720.3035 which states:

"The authority of an association or any architectural, construction improvement, or other such similar committee of an association to review and approve plans and specifications for the location, size type, or appearance of any structure or other improvement on a parcel, or to enforce standards for the external appearance of any structure or improvement located on a parcel shall be permitted only to the extent that the authority is specifically stated or reasonably inferred as to such location, size, type or appearance in the Declaration of Covenants or other published guidelines and standards authorized by the Declaration of Covenants."

Therefore, the following is the approved color pallet which consists of a packet of eleven (11) color card collections representing a cross section of color schemes consistent with the Westwind/Reserve current architectural diversity:

1. Exteriors – Valspar
2. Exterior Color Combinations – Glidden
3. Colors of Inspiration – Olympic
4. Exterior Finishes For All Climates – Scott
5. Suburban Modern – Sherwin-Williams
6. American Heritage – Sherwin-Williams
7. Northern Shores and Seaports – Sherwin-Williams
8. Southern Shores and Beaches – Sherwin-Williams
9. Desert and Southwest Style – Sherwin-Williams
10. Exterior Collection – Behr
11. Exterior Styles – PPG - Glidden

When you have made the decision to repaint your home, simply contact Monarch Association Management and they will make arrangements for you to check out the color pallet packet. Each color card is divided into three areas: base color, trim color and accent color. Once you have made your **tri-color selection as written**, complete the Architectural Review Committee Form enclosed in the packet and return to Monarch for approval by the Board. Although, there are various paint manufacturers you may have the colors mixed to match by the manufacturer of your choice. Also current colors are "grandfathered in" should you want to repaint a current color in the community.



MEMBER OF
community
ASSOCIATION INSTITUTE

500 ALT. 19 SOUTH ♦ PALM HARBOR, FL 34683 ♦ (727) 204-4766

M. Susan (Sue) Marino, LCAM ♦ sue@monarcham.com

Cindy L. Stananought, LCAM ♦ cindy@monarcham.com Carrie M. Schranz, LCAM ♦ carrie@monarcham.com

Brenda Hess, Administrative Services Coordinator ♦ admin@monarcham.com

If you have any questions regarding the new approval process, please feel free to contact a member of the Board or Sue at Monarch Association Management.

For the Board,
WESTWIND/RESERVE AT RIDGEMOOR HOMEOWNERS' ASSOCIATION, INC.

M. Susan (Sue) Marino, LCAM

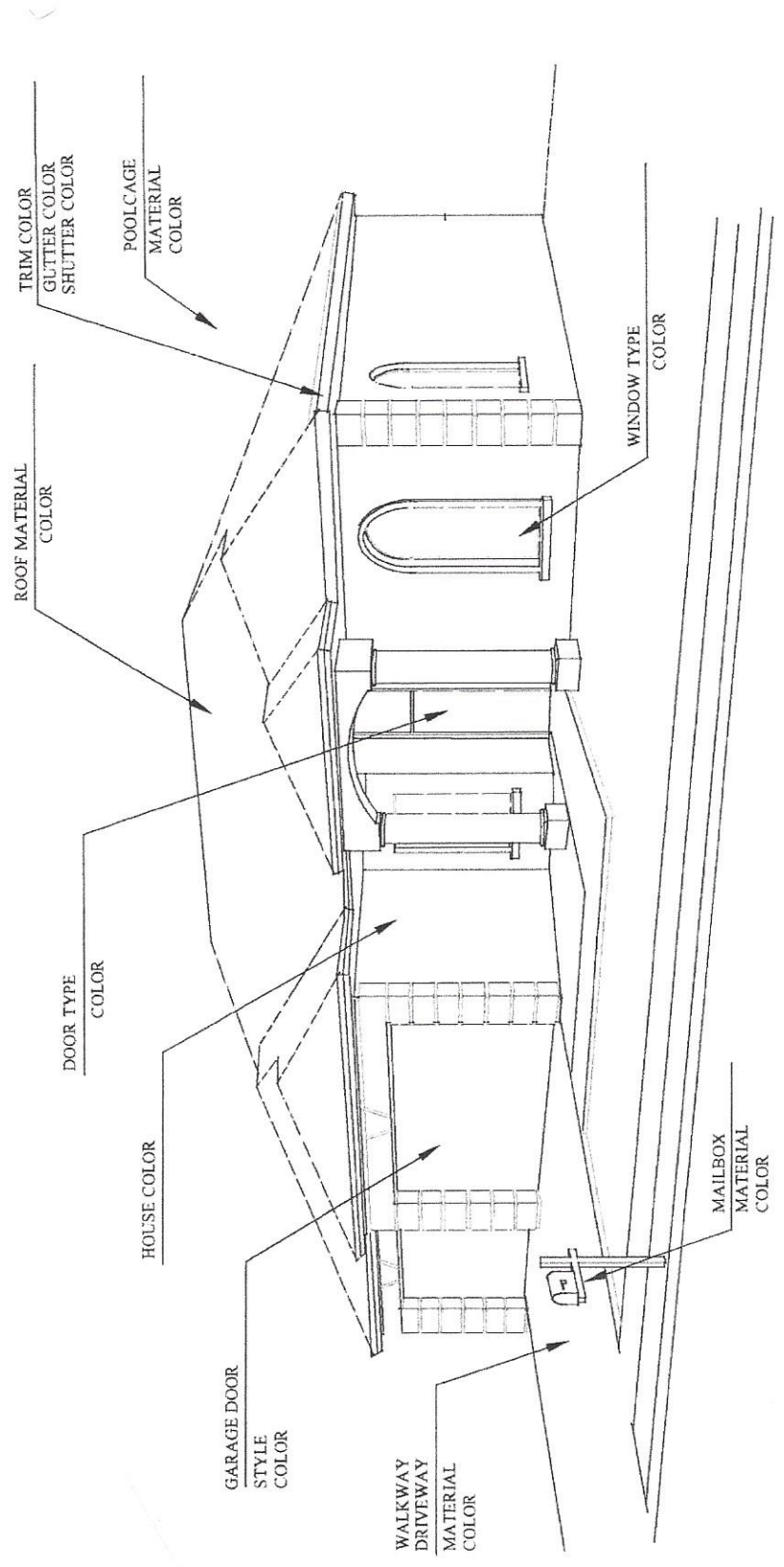
M. Susan (Sue) Marino, LCAM
Monarch Association Management, Inc.
500 Alternate 19 South
Palm Harbor, FL 34683
(727) 204-4766

sue@monarcham.com

8/2018

PAINT PALETTE SELECTION(S) FROM BOOK # _____

- Base Color: _____
House Body – Garage Door
- Trim Color: _____
Facia – Garage Door – Gutters -
- Accent Color: _____
Front Door – Shutters -



Westwind / Reserve at Ridgemoor Homeowners' Association, Inc.

Approved Color Pallet

1. Exteriors – Valspar
2. Exterior Color Combinations – Glidden
3. Colors of Inspiration – Olympic
4. Exterior Finished For All Climates – Scott
5. Suburban Modern – Sherwin-Williams
6. American Heritage – Sherwin-Williams
7. North Shores and Seaports – Sherwin-Williams
8. Southern Shores and Beaches – Sherwin-Williams
9. Desert and Southwest Style – Sherwin-Williams
10. Exterior Collection – Behr
11. Exterior Styles – PPG – Glidden

Approved – August 23, 2018